

MATERIALI

MATERIALS

LEGNO
WOOD



FAGGIO EVAPORATO **naturale**
STEAMED BEECH **natural**



FAGGIO EVAPORATO **noce chiaro**
STEAMED BEECH **light walnut**



FAGGIO EVAPORATO **noce medio**
STEAMED BEECH **medium walnut**



FAGGIO EVAPORATO **doussiè**
STEAMED BEECH **doussiè**



FAGGIO EVAPORATO **cuoio**
STEAMED BEECH **leather**



FAGGIO EVAPORATO **antracite**
STEAMED BEECH **anthracite**



FAGGIO CRUDO **rovere**
UNSTEAMED BEECH **oak**



FAGGIO CRUDO **avorio**
UNSTEAMED BEECH **ivory**



IROKO **naturale**
IROKO **natural**



IROKO **noce chiaro**
IROKO **light walnut**



IROKO **noce medio**
IROKO **medium walnut**



IROKO **doussiè**
IROKO **doussiè**



IROKO **wengè**
IROKO **wengè**



IROKO **cuoio**
IROKO **leather**



IROKO **antracite**
IROKO **anthracite**



DOUSSIE' naturale
DOUSSIE' natural



ACERO naturale
MAPLE natural



ROVERE naturale
OAK natural



ROVERE sbiancato spazzolato
OAK bleached brushed



ROVERE cuoio
OAK leather



ROVERE antracite
OAK anthracite



ROVERE wengè
OAK wengè



ROVERE oliva
OAK olive



ROVERE muschio
OAK musk



GRAFFITI FAGGIO antracite
GRAFFITI BEECH anthracite



GRAFFITI IROKO antracite
GRAFFITI IROKO anthracite



GRAFFITI ROVERE naturale
GRAFFITI OAK natural



GRAFFITI ROVERE cuoio
GRAFFITI OAK leather



GRAFFITI ROVERE tabacco
GRAFFITI OAK tobacco



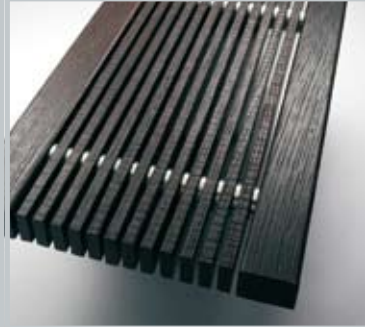
GRAFFITI ROVERE oceano
GRAFFITI OAK ocean



CRASH WOOD antracite
CRASH WOOD anthracite



TOKYO ROVERE **olio naturale**
TOKYO OAK **natural oil**



TOKYO ROVERE **wengè**
TOKYO OAK **wengè**



ROVERE **oro argentato**
OAK **silvery gold**



ROVERE **argento dorato**
OAK **golden silver**



ROVERE **oro anticato**
OAK **antiqued gold**



ROVERE **argento anticato**
OAK **antiqued silver**

Vernici a richiesta: antigraffio (TRAFFIC),
ad acqua, ad olio (solamente iroko e rovere)
On request paints: *scratch resistant paint*
(TRAFFIC), *water paint, oil paint (iroko and*
oak woods only)

Finiture a richiesta: spazzolatura
(solamente iroko e rovere), tinta a campione
(dietro conferma fattibilità)
On request finishings: *brushing (iroko and*
oak woods only), paint as per sample (upon
feasability confirmation)



GOFFRATO
EMBOSS



GOFFRATO **bianco**
EMBOSS **white**



GOFFRATO **grigio chiaro**
EMBOSS **light grey**



GOFFRATO **grigio medio**
EMBOSS **medium grey**



GOFFRATO **metallizzato nero**
EMBOSS **metallic black**

MICACEO

MICACEOUS



MICACEO 609.0400 grigio chiaro
MICACEOUS 609.0400 light grey



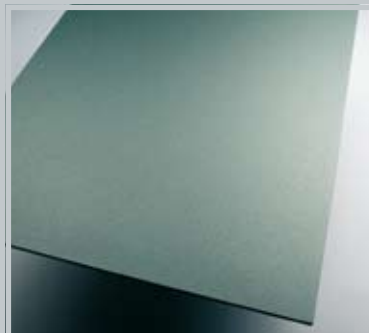
MICACEO 609.0401 grigio medio
MICACEOUS 609.0401 medium grey



MICACEO 609.0402 grigio acciaio
MICACEOUS 609.0402 steel grey



MICACEO 609.0403 nero onice
MICACEOUS 609.0403 onyx black



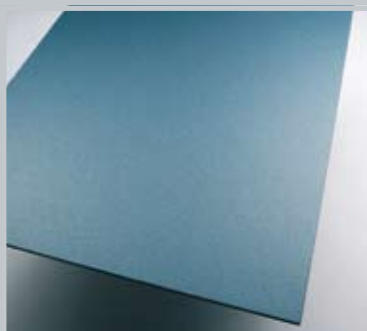
MICACEO 609.0405 verde cristallo
MICACEOUS 609.0405 crystal green



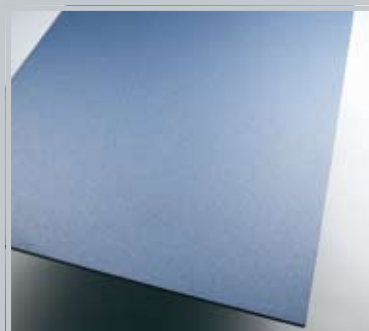
MICACEO 609.0412 grigio scuro
MICACEOUS 609.0412 dark grey



MICACEO 609.0413 grigio azzurro
MICACEOUS 609.0413 light blue grey



MICACEO 609.0414 blu notte
MICACEOUS 609.0414 night blue



MICACEO 609.0416 carta da zucchero
MICACEOUS 609.0416 dark blue



MICACEO 609.0418 verde antico
MICACEOUS 609.0418 antique green



MICACEO 609.0419 bronzo antico
MICACEOUS 609.0419 antique bronze



MICACEO 609.0420 marrone
MICACEOUS 609.0420 brown



MICACEO 609.0421 viola antico
MICACEOUS 609.0421 antique violet

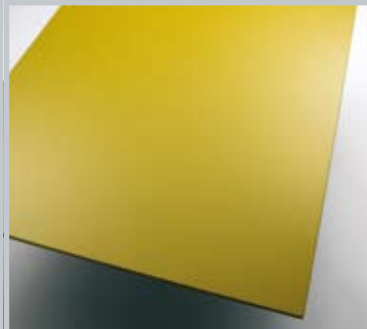


MICACEO 609.0423 viola
MICACEOUS 609.0423 violet



MICACEO 609.0424 vinaccia
MICACEOUS 609.0424 bluish violet

LACCATO LACQUERED



LACCATO SEMILUCIDO **RAL 1027 verde senape**
SEMI-POLISHED LACQUERED **RAL 1027 mustard green**



LACCATO SEMILUCIDO **RAL 2004 arancio**
SEMI-POLISHED LACQUERED **RAL 2004 orange**



LACCATO SEMILUCIDO **RAL 3007 aceto balsamico**
SEMI-POLISHED LACQUERED **RAL 3007 balsamic vinegar**



LACCATO SEMILUCIDO **RAL 7016 grigio antracite**
SEMI-POLISHED LACQUERED **RAL 7016 anthracite grey**



LACCATO SEMILUCIDO **RAL 7034 grigio sabbia**
SEMI-POLISHED LACQUERED **RAL 7034 sand grey**



LACCATO SEMILUCIDO **RAL 8022 marrone scuro**
SEMI-POLISHED LACQUERED **RAL 8022 dark brown**



LACCATO SEMILUCIDO **RAL 9001 bianco crema**
SEMI-POLISHED LACQUERED **RAL 9001 cream white**



LACCATO SEMILUCIDO **RAL 9016 bianco assoluto**
SEMI-POLISHED LACQUERED **RAL 9016 white**

VETRO GLASS



VETRO TRASPARENTE **naturale**
TRANSPARENT GLASS **natural**



VETRO TRASPARENTE **extrachiario**
TRANSPARENT GLASS **extralight**



VETRO TRASPARENTE **antracite**
TRANSPARENT GLASS **anthracite**



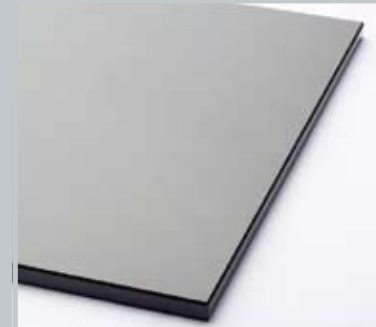
VETRO TRASPARENTE **bronzo**
TRANSPARENT GLASS **bronze**



VETRO ACIDATO **naturale**
OPAQUE GLASS **natural**



VETRO LACCATO **bianco**
LACQUERED GLASS **white**



VETRO LACCATO **nero**
LACQUERED GLASS **black**



VETRO LACCATO **grigio perla**
LACQUERED GLASS **pearl grey**



VETRO LACCATO **azzurro**
LACQUERED GLASS **blue**



VETRO LACCATO **giallo**
LACQUERED GLASS **yellow**



VETRO LACCATO **viola**
LACQUERED GLASS **violet**



ACCIAIO
STEEL



ACCIAIO **ossidato**
STEEL **oxidized**



ACCIAIO **smerigliato**
STEEL **ground**



ACCIAIO INOX **spazzolato**
STAINLESS STEEL **brushed**



ACCIAIO INOX **lucidato**
STAINLESS STEEL **polished**

PELLE
LEATHER



PELLE white milk
LEATHER white milk



PELLE soft moka
LEATHER soft moka



PELLE black touch
LEATHER black touch

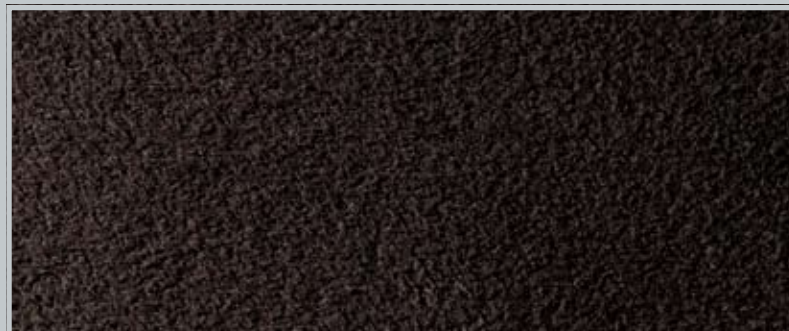
ALCANTARA
ALCANTARA



ALCANTARA beige home



ALCANTARA gray sand



ALCANTARA black smoke